



The Snow Queen



Kay and Gerda were best friends.
They were like brother and sister.



Kay and Gerda were playing.
Kay got a bit of mirror in his eye.
The mirror made him cross.
Kay was mean to Gerda.

The evil Snow Queen gave Kay a magical kiss.
Kay forgot about Gerda.
The Queen took Kay to her house.



Gerda missed her friend Kay.
She went looking for him in the snow.
Gerda met a girl with a deer.
They took Gerda to find Kay.

Gerda found Kay at The Queen's house.
He was almost frozen!
Gerda cried. Her tears melted the mirror.
Kay was happy again. They went back home.



Questions

1. Who got a bit of mirror in his eye? Tick one.

- ☐ Gerda
- ☐ Kay
- ☐ The Snow Queen

2. How did the mirror make Kay feel? Tick one.

- ☐ happy
- ☐ tired
- ☐ cross

3. Which animal was with the girl? Tick one.

- ☐ a horse
- ☐ a deer
- ☐ a donkey

4. Where did The Snow Queen take Kay? Tick one.

- ☐ to her house
- ☐ into the forest
- ☐ to a town

5. What melted the mirror? Tick one.

- ☐ some snow
- ☐ the sun
- ☐ Gerda's tears

Answers

1. Who got a bit of mirror in his eye? Tick one.

- ☐ Gerda
- ☒ **Kay**
- ☐ The Snow Queen

2. How did the mirror make Kay feel? Tick one.

- ☐ happy
- ☐ tired
- ☒ **cross**

3. Which animal was with the girl? Tick one.

- ☐ a horse
- ☒ **a deer**
- ☐ a donkey

4. Where did The Snow Queen take Kay? Tick one.

- ☒ **to her house**
- ☐ into the forest
- ☐ to a town

5. What melted the mirror? Tick one.

- ☐ some snow
- ☐ the sun
- ☒ **Gerda's tears**



The Snow Queen



A mean sprite made a magical mirror.
The mirror made all things look horrible.

A cheeky sprite smashed the mirror.
The broken shards landed everywhere.



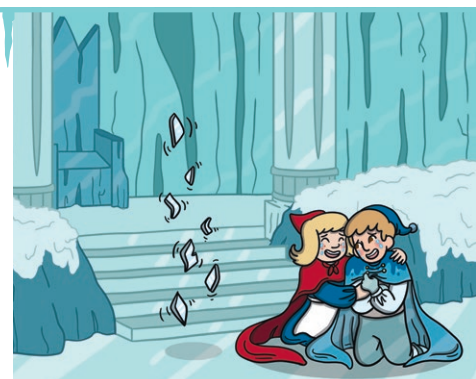
Kay and Gerda were best friends.
They played together like brother and sister.
Kay got a piece of the magical mirror in his eye.
The mirror made him angry and mean.
He was unkind to Gerda and he made her feel sad.

Kay saw a sleigh. He wanted to go for a ride.
The sleigh was owned by the evil Snow Queen.
She gave Kay two magical kisses. The first kiss stopped
him from feeling cold. The next kiss made him forget
about Gerda. The evil Snow Queen took Kay to her palace.



Gerda missed Kay. She went to look for him.
She met a girl and they became friends.
The girl told Gerda that Kay was in Lapland.
The girl and her reindeer wanted to help Gerda
to find Kay. They set off to look for him.

Gerda found Kay at the palace. He was almost
frozen! He did not remember Gerda so she began
to cry. Her tears melted the mirror in Kay's eye.
The spell was broken and the friends went home.



Questions

1. Who made the magical mirror? Tick one.

- ☐ a sprite
- ☐ a girl
- ☐ The Snow Queen

2. Number the events from 1-3 to show the order that they happened in.

- ☐ The Snow Queen takes Kay to her palace.
- ☐ Gerda's tears melt the mirror.
- ☐ Kay gets a piece of the mirror in his eye.

3. How did The Snow Queen stop Kay from feeling cold? Tick one.

- ☐ She gave him a sweet.
- ☐ She told him a story.
- ☐ She gave him a kiss.

4. Find and copy one word which shows that the sprite was cruel.

5. Who smashed the mirror?

Answers

1. Who made the magical mirror? Tick one.

- ☒ **a sprite**
- ☐ a girl
- ☐ The Snow Queen

2. Number the events from 1-3 to show the order that they happened in.

- 2** The Snow Queen takes Kay to her palace.
- 3** Gerda's tears melt the mirror.
- 1** Kay gets a piece of the mirror in his eye.

3. How did The Snow Queen stop Kay from feeling cold? Tick one.

- ☐ She gave him a sweet.
- ☐ She told him a story.
- ☒ **She gave him a kiss.**

4. Find and copy one word which shows that the sprite was cruel.

mean

5. Who smashed the mirror?

A cheeky sprite smashed the mirror.



The Snow Queen



There was once an evil sprite who made a magical mirror. The mirror made all good things look horrible. One day, a cheeky, young sprite smashed the mirror and the tiny pieces were scattered everywhere.



Two best friends called Kay and Gerda lived far away. They played together like brother and sister. Kay got a piece of the magical mirror in his eye while he was playing one day. The mirror made him angry and mean. He began to say cruel things to Gerda and he made her feel very upset.

Kay was sledding in the snow. He saw a sleigh and he wanted to go for a ride. The driver of the sleigh turned into the evil Snow Queen. She gave Kay two magical kisses. The first kiss made him stop feeling cold. The second kiss made him forget about Gerda. The Snow Queen took Kay to her palace.



Gerda was heartbroken about losing her friend. She made a plan to go and search for him. She met a crow and it told her that Kay had married a princess. The crow was wrong. The boy at the palace looked like Kay but it was not him.



Gerda then met a girl with a reindeer. Gerda told the girl all about Kay and they soon became friends. The girl told Gerda that she had seen Kay in Lapland. They set off on her reindeer to look for him.



Gerda arrived at the evil Snow Queen's palace. She found Kay almost frozen! He did not remember Gerda. Gerda cried and she began to sing Kay a happy song. Her tears broke The Snow Queen's spell. The tears melted the mirror pieces and Kay became happy again. He smiled and he remembered Gerda. The two best friends went home and they lived happily ever after.

Questions

1. Number the events from 1-4 to show the order that they happened in. The first one has been done for you.

- ☐ Kay gets a piece of the mirror in his eye.
- ☐ A crow tells Gerda that Kay has married a princess.
- ☐ The Snow Queen takes Kay to her palace.
- ☒ 1 The cheeky, young sprite smashes the mirror.

2. What did The Snow Queen's second kiss do to Kay? Tick one.

- ☐ It turned him into stone.
- ☐ It made him stop feeling cold.
- ☐ It made him forget about Gerda.

3. Fill in the missing word.

Kay saw a _____ and he wanted to go for a ride.

4. Find and copy one word which shows that Gerda was very upset about losing her friend.

5. Where did the girl with the reindeer see Kay?

6. Why do you think that the girl chose to help Gerda?

Answers

1. Number the events from 1-4 to show the order that they happened in. The first one has been done for you.

- 2** Kay gets a piece of the mirror in his eye.
- 4** A crow tells Gerda that Kay has married a princess.
- 3** The Snow Queen takes Kay to her palace.
- 1** The cheeky, young sprite smashes the mirror.

2. What did The Snow Queen's second kiss do to Kay? Tick one.

- ☐ It turned him into stone.
- ☐ It made him stop feeling cold.
- ☒ **It made him forget about Gerda.**

3. Fill in the missing word.

Kay saw a **sleigh** and he wanted to go for a ride.

4. Find and copy one word which shows that Gerda was very upset about losing her friend.

heartbroken

5. Where did the girl with the reindeer see Kay?

The girl with the reindeer had seen Kay in Lapland.

6. Why do you think that the girl chose to help Gerda?

Pupils' own responses, such as: I think that the girl may have wanted to help Gerda because she felt sorry for her and she thought that she knew where Kay was.