

# All About Valentine's Day



Valentine's Day is named after Saint Valentine.

Valentine's Day is on the 14<sup>th</sup> February every year.

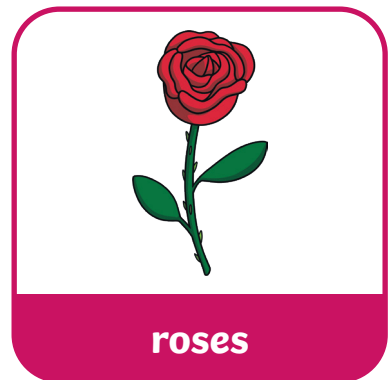
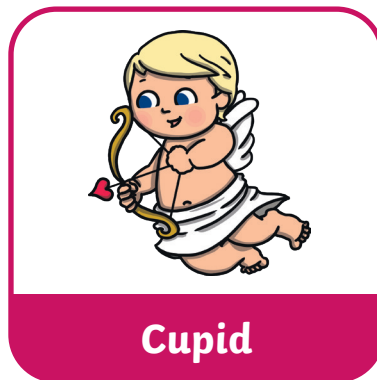
People show their love to another person on Valentine's Day.

## What Do People Do on Valentine's Day?



Here are some of the symbols which make people think of love on Valentine's Day.

## Symbols of Valentine's Day



## Did You Know...?

Some people say that you will fall in love if you are hit by one of Cupid's arrows.

# Questions

1. When is Valentine's Day? Tick one.

- ☐ 25<sup>th</sup> December
- ☐ 14<sup>th</sup> February
- ☐ 7<sup>th</sup> February

2. Who is Valentine's Day named after? Tick one.

- ☐ Saint Valentine
- ☐ Saint Patrick
- ☐ Father Christmas

3. What do people do on Valentine's Day? Tick one.

- ☐ a special dance
- ☐ send a card
- ☐ wear a party hat

4. Which of the following is a symbol of Valentine's Day? Tick one.

- ☐ an apple
- ☐ a heart
- ☐ a cross

5. What is special about Cupid's arrows? Tick one.

- ☐ They are sharp.
- ☐ They are all red.
- ☐ They can make people fall in love.

# Answers

1. When is Valentine's Day? Tick one.

- ☐ 25<sup>th</sup> December
- ☒ **14<sup>th</sup> February**
- ☐ 7<sup>th</sup> February

2. Who is Valentine's Day named after? Tick one.

- ☒ **Saint Valentine**
- ☐ Saint Patrick
- ☐ Father Christmas

3. What do people do on Valentine's Day? Tick one.

- ☐ a special dance
- ☒ **send a card**
- ☐ wear a party hat

4. Which of the following is a symbol of Valentine's Day? Tick one.

- ☐ an apple
- ☒ **a heart**
- ☐ a cross

5. What is special about Cupid's arrows? Tick one.

- ☐ They are sharp.
- ☐ They are all red.
- ☒ **They can make people fall in love.**

# All About Valentine's Day



Valentine's Day is named after Saint Valentine. Saint Valentine was a Roman priest. Valentine's Day is celebrated on the 14<sup>th</sup> February every year.

## When Did Valentine's Day Start?



Valentine's Day came from a Roman festival called Lupercalia.

Boys pulled the names of girls from a box and they would be boyfriend and girlfriend for the festival.



The Christian church decided to have a festival celebrating love to remember Saint Valentine.



## What Do People Do on Valentine's Day?

People might show their loved ones that they care by...

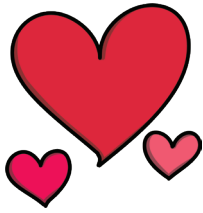


## Symbols of Valentine's Day



A symbol is something that makes people think of something else. These things are all symbols of Valentine's Day.

## All About Valentine's Day



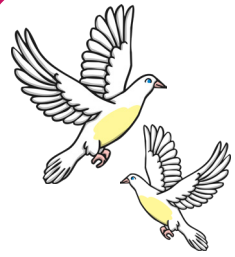
hearts



Cupid



red roses



doves



Did You Know...?



Some stories say that people can fall in  
love when Cupid shoots them with his  
magic arrows.



# Questions

1. Who was Saint Valentine? Tick one.

- ☐ a Roman priest
- ☐ a teacher
- ☐ a shopkeeper

2. What was Lupercalia? Tick one.

- ☐ a type of pudding
- ☐ a Roman festival
- ☐ a pop band

3. Which of these things are symbols of Valentine's Day? Tick one.

- ☐ hearts
- ☐ stories
- ☐ February

4. What do Cupid's arrows do?

---

---

5. Fill in the missing word.

Valentine's Day is celebrated on the 14<sup>th</sup> \_\_\_\_\_ every year.

# Answers

1. Who was Saint Valentine? Tick one.

- ☒ **a Roman priest**
- ☐ a teacher
- ☐ a shopkeeper

2. What was Lupercalia? Tick one.

- ☐ a type of pudding
- ☒ **a Roman festival**
- ☐ a pop band

3. Which of these things are symbols of Valentine's Day? Tick one.

- ☒ **hearts**
- ☐ stories
- ☐ February

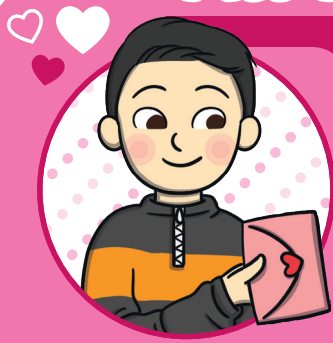
4. What do Cupid's arrows do?

**People can fall in love when Cupid shoots them with his magic arrows.**

5. Fill in the missing word.

Valentine's Day is celebrated on the 14<sup>th</sup> **February** every year.

# All About Valentine's Day



## Who Was Saint Valentine?



Valentine was a Roman priest. The Roman emperor Claudius had forbidden people from getting married because he said that it was distracting the men from fighting in his army.

Valentine thought that people should be able to get married if they wanted to. He secretly carried on marrying people until he was sent to prison by the Emperor. Valentine was made a saint and people remember him every year on the 14<sup>th</sup> February with a celebration about love.



Cupid

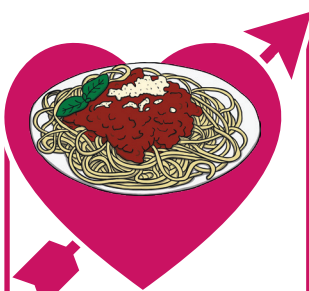
**Cupid is the son of Venus. Venus is the Roman goddess of love.**

Some myths say that two people can fall in love if Cupid shoots them with his arrows.

## What Do People Do on Valentine's Day?



People might show their loved ones that they care by...



taking  
them out  
for a treat,



Sending a  
gift of  
flowers or  
chocolates



or sending a  
card decorated  
with a  
Valentine's  
design.





### What Are the Symbols of Valentine's Day?

A symbol is something that makes you think about something else. Roses, hearts, doves and the colours red and pink are all symbols of Valentine's Day.

**Shhh! It's a Secret!**



**Traditionally, people do not sign their cards on Valentine's Day. They leave it as a mystery!**

# Questions

1. Who is Cupid the son of? Tick one.

- ☐ Claudius
- ☐ Saint Valentine
- ☐ Venus

2. What was Valentine made into? Tick one.

- ☐ an emperor
- ☐ a saint
- ☐ a dove

3. Find and copy one word that means the same as 'not allowed'.

---

4. Fill in the missing word.

A \_\_\_\_\_ is something that makes you think about something else.

5. What job did Saint Valentine have?

---

6. Why is it important to have a festival to celebrate love?

---

---

---

# Answers

1. Who is Cupid the son of? Tick one.

- ☐ Claudius
- ☐ Saint Valentine
- ☒ **Venus**

2. What was Valentine made into? Tick one.

- ☐ an emperor
- ☒ **a saint**
- ☐ a dove

3. Find and copy one word that means the same as 'not allowed'.

**forbidden**

4. Fill in the missing word.

A **symbol** is something that makes you think about something else.

5. What job did Saint Valentine have?

**Saint Valentine was a Roman priest.**

6. Why is it important to have a festival to celebrate love?

**Pupils' own responses, such as: It is important to have a festival to celebrate love so that people can show each other how much they care.**